



Easy-to-use for HR managers and candidates.
Robust LMS is for efficient recruiting process.

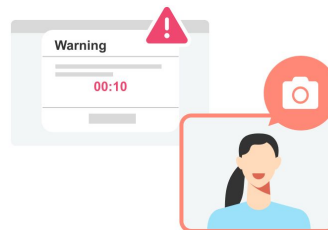
Recruitment/Promotional Exam

Transform your recruitment test convenient and inexpensive with online exams controlled by anti-cheat features.

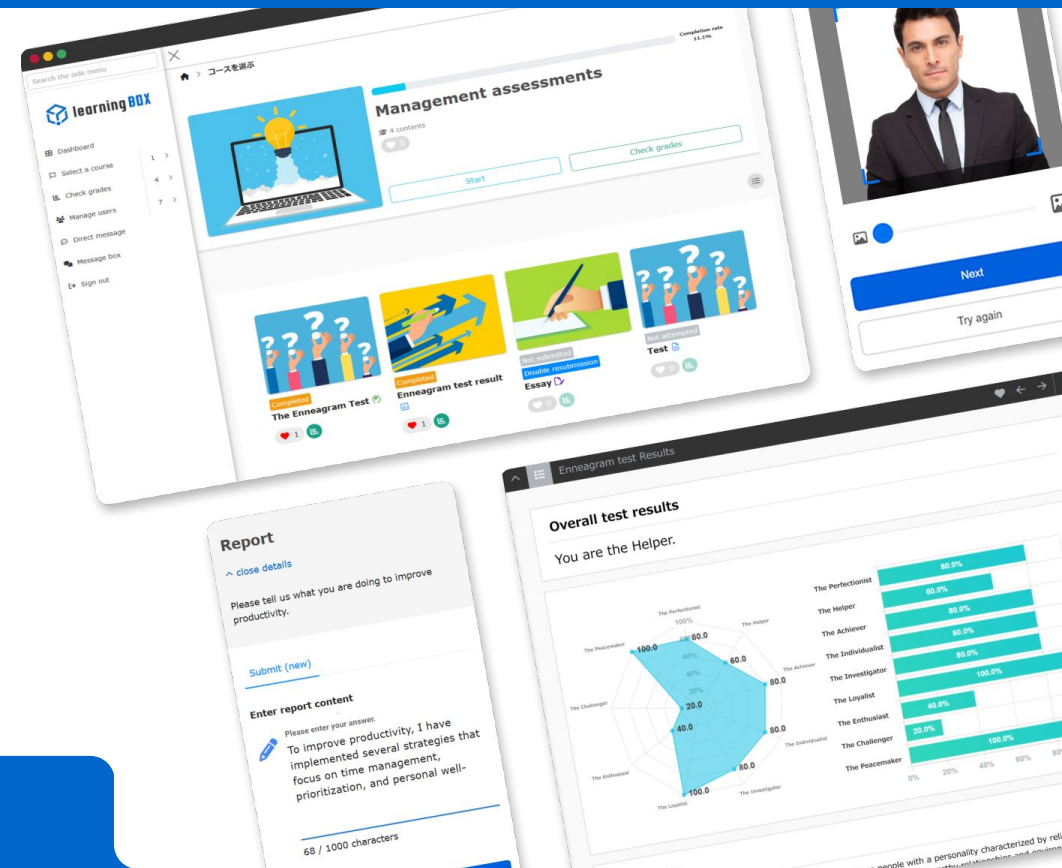
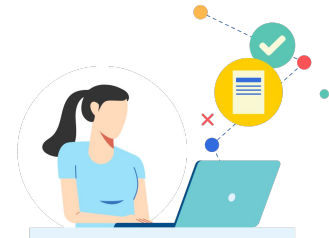
AI-Powered Facial Authentication



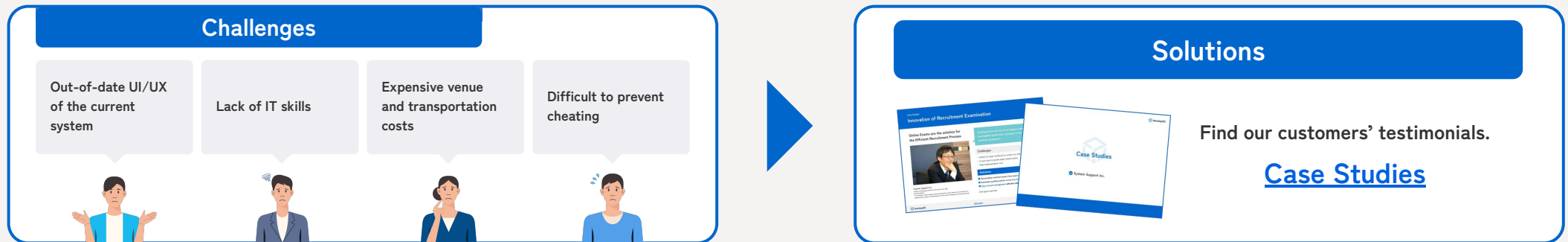
Detect Browser Switching & Capture Photos



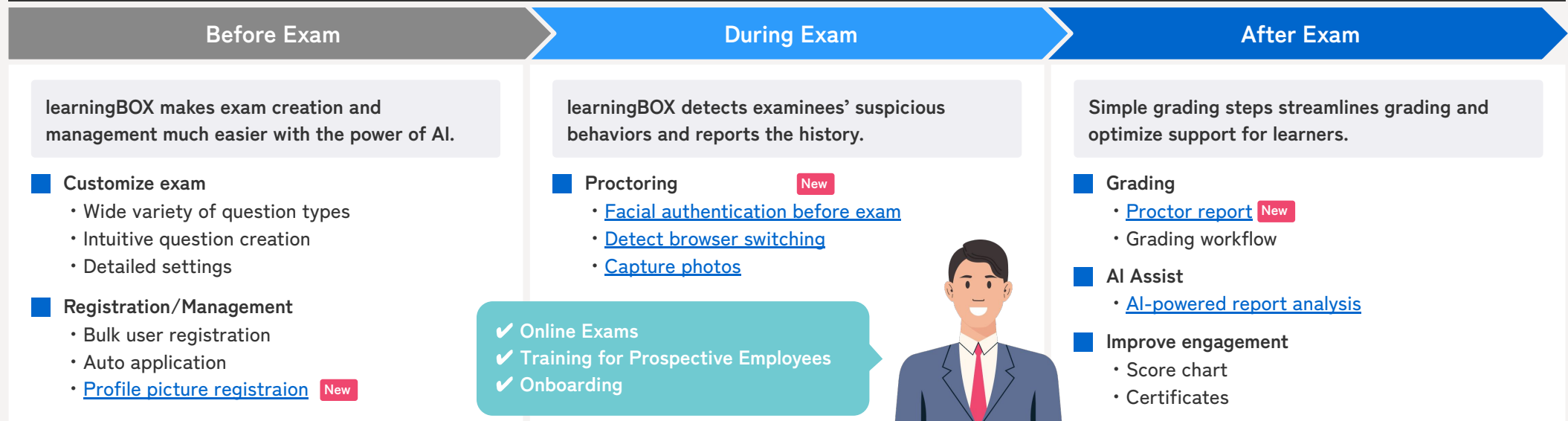
AI-Assisted Content Creation & Report Analysis



Ditch Manual Process for Recruitment and Promotional Examinations with Flexible Features



3 Steps for Recruitment/Promotional Examinations



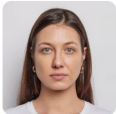


AI-Powered Facial Authentication

Prevent or monitor cheating and malpractice during online examinations.

AI recognizes the examinees and detects impersonation with photo capturing.

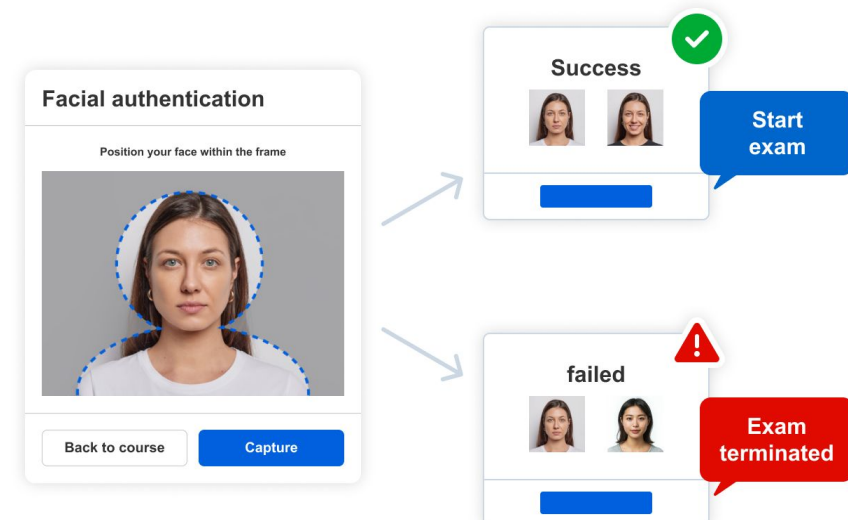
Profile Picture

- Profile pictures can be registered as user information.
*Self-registration available.
- Managers can be assigned to confirm the pictures.
*Registered pictures will be displayed on each examinee's profile page.

Sign-in ID	Name	Profile picture
exam01	Ann Smith	
exam02	Rachel Blackmer	
exam03	Kenn Peterson	

Facial Authentication

- AI authenticates a captured photo to identify the examinee.
- When AI detects impersonation, the exam will be terminated.



Browser Proctoring/ Photo Capturing

learningBOX detects examinees' suspicious behaviors including browser/tab switching.

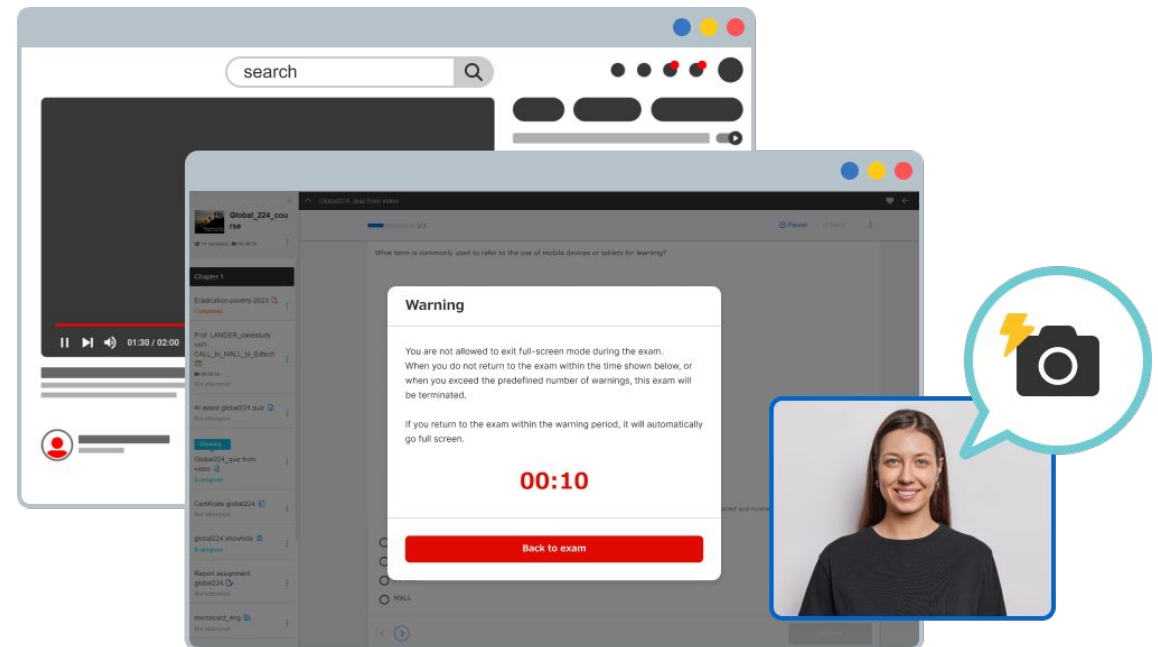
Warnings and their actions during the exam will be recorded in the system to determine the suspicion level.

Browser Proctoring

- A warning will be shown when examinees switch tabs and cancel full screen.
- An examination can be terminated when an examinee exceeds the predefined number of warnings or does not return to the exam within the specified time.

Photo Capturing

- Up to 30 photos can be captured during the exam to report examinees' behaviors.
- Photos can be captured randomly or when warnings are shown.



Proctor Report/ Suspicion Level

Examinees' behaviors will be captured and stored in the proctor report.
Examiners can check all the activity records.

Steps

Before Exam

- AI-powered facial recognition & authentication



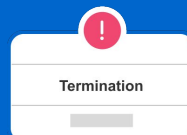
During Exam

- Exam proctoring to detect browser/tab switching
- Show warnings



After Exam

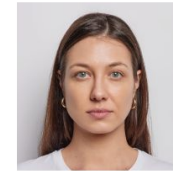
- Suspicion level shown
- Status confirmed by admin



Proctor Report



Profile picture



✓ AI recognized



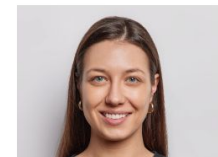
Pre-facial authentication



Profile picture during the exam (First time)



Warning (First time)



Termination

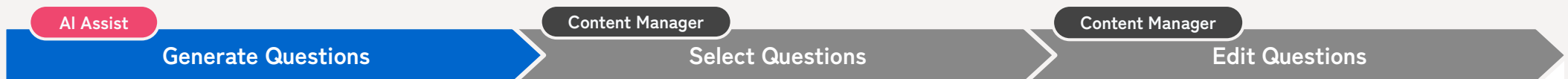
Warning limit exceeded.

The status was changed to "Suspected violation."

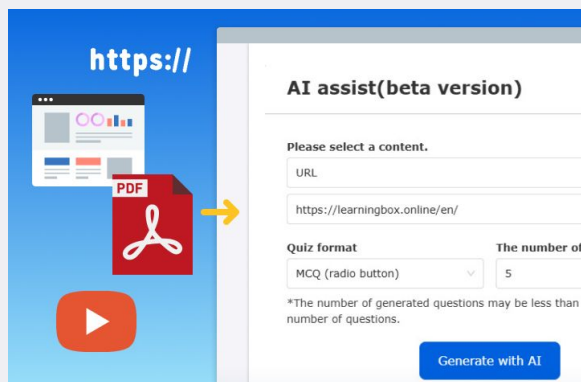
Automate your Course Building with the Power of AI

AI builds a course structure and each content just by uploading your videos or PDFs.

*Both linguistic and non-linguistic aspects are supported.



AI generates questions based on the data collected from uploaded video or PDF files.

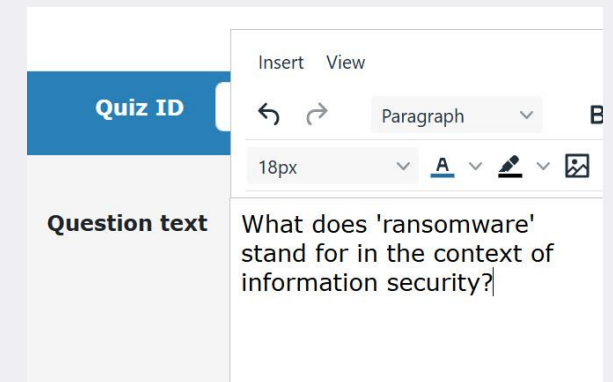


After the preview of the generated question sentences and answers, you can **select what you want to add to the exam.**

Generated result(3 questions) Delete all

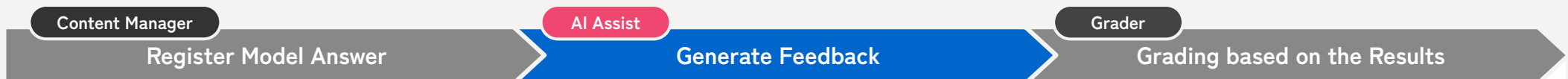
Question text	options	Delete
What does 'malware' stand for in the context of information security?	Correct answer) Malicious Software Incorrect answer) Made-up Learning War e Incorrect answer) Managed Abstraction Layer Incorrect answer) Massive Algorithm	×

Questions are **editable**. According to the content, you can also insert images, change font size/color, etc.



AI Saves your Time on Grading Writing Reports

AI analyzes submitted content and generates feedback based on the customized model answer. Streamlining responses will minimize your workload.



A Content manager **registers a model answer** on an essay report.

Model answer

Model answers are displayed during grading to help the grader. Also, AI indicates the submission's similarity to the model answer.

Language

English ▼

Model answer **Required**

The evolution of generative AI technology has profoundly impacted various sectors, including entertainment, healthcare, education, and business. For example, in education, AI-powered tools can personalize learning experiences, adapt to individual student needs, and provide instant feedback on assignments.

AI automatically generates a feedback response based on the registered model answer.

result of analysis Model answer

Similarity with model answer

73%

Feedback content

Your answer is concise and easy to understand, but it lacks specific examples of the anchoring effect. However, it could be more detailed if we focused a little more on the specific examples.

A grader can **edit the feedback generated by AI** and completes grading.

Score

85

Completion status

Pass ▼

Select

Fail

Pass

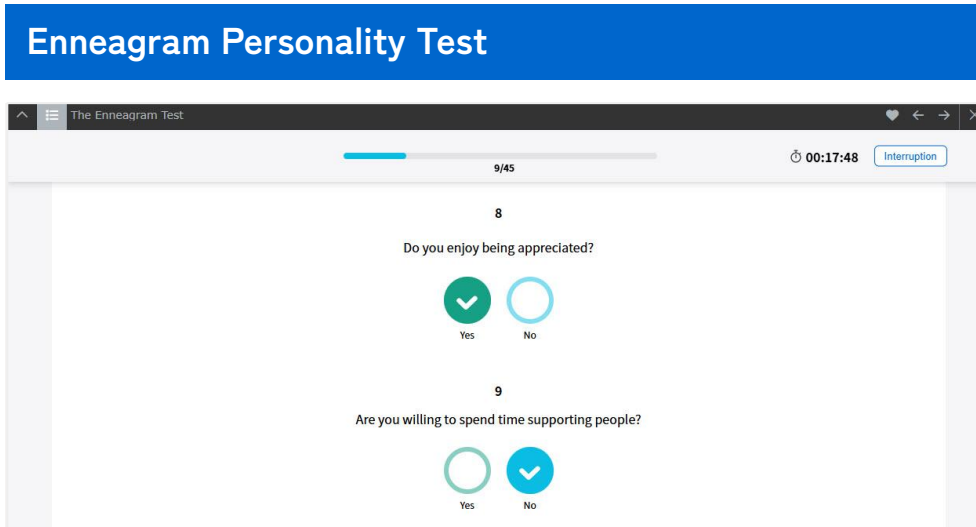
Feedback to learner

Your answer is similar to the sample answer. If you want to improve your answer, you can focus on providing more specific examples of the anchoring effect.

Enhance Recruitment Approach with Free Personality Tests

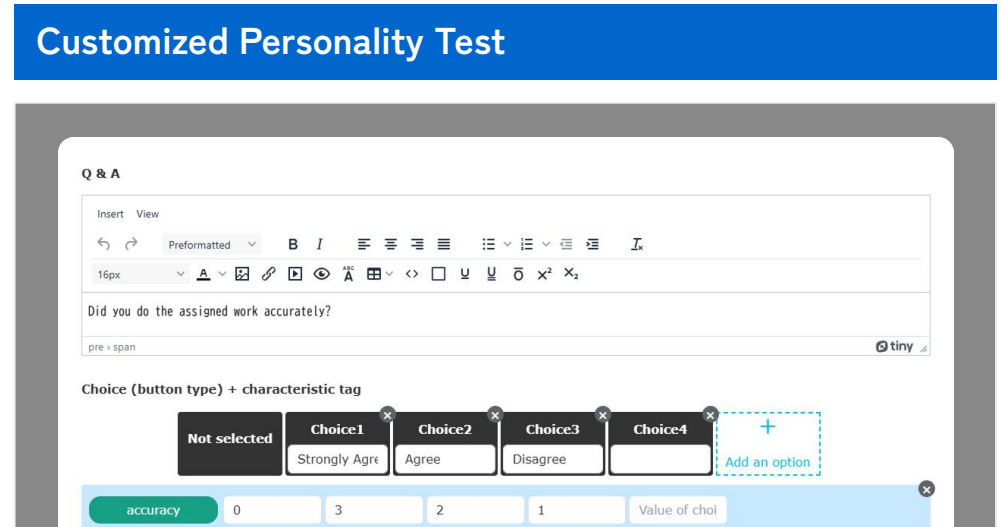
Two types of personality test, Enneagram and Big Five personality tests, are available on learningBOX without extra charges. Ready-to-use templates will save your time to add a personality test to your recruitment process, and automated gradebook will help you find candidates' strength with graphs and charts. *Customized personality test is also available.

Enneagram Personality Test



Enneagram personality test will help you learn candidates' personalities with nine types, and is offered without extra charge on learningBOX. Each candidate can also access to the results. **Big Five Personality Test** is recommended for simpler use.

Customized Personality Test



Questions, answers, values and traits tags can be customized for more tailored personality test. Also, third-party evaluations will bring evaluation objectivity, which is helpful especially for promotional examinations.

Instant Test Results on learningBOX

Submitted answers will be automatically graded and delivered to candidates on learningBOX. Each grade indicates their tendency and shows answer details with graphs and charts.

*You can also restrict access to their test results.

Score chart

Required

Permission to view grades

- You can customize items to show from the 10 types of panels including pass/fail, pass rate, chart, etc.
- Well-organized results helps both you and candidates analyze the data and evaluate their strength and weakness.

Grades

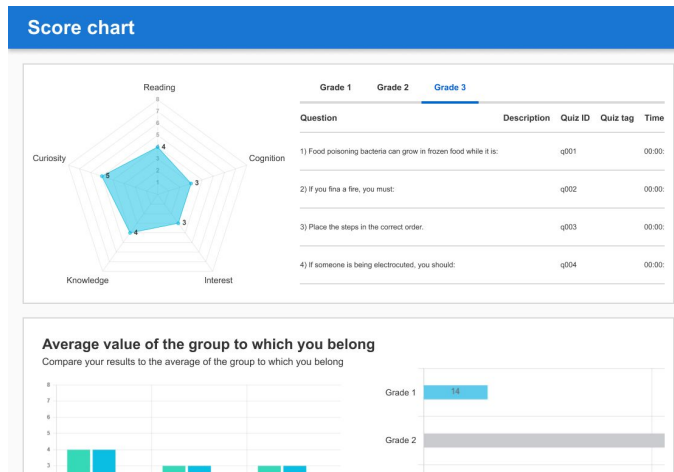
Required

Permission to view grades

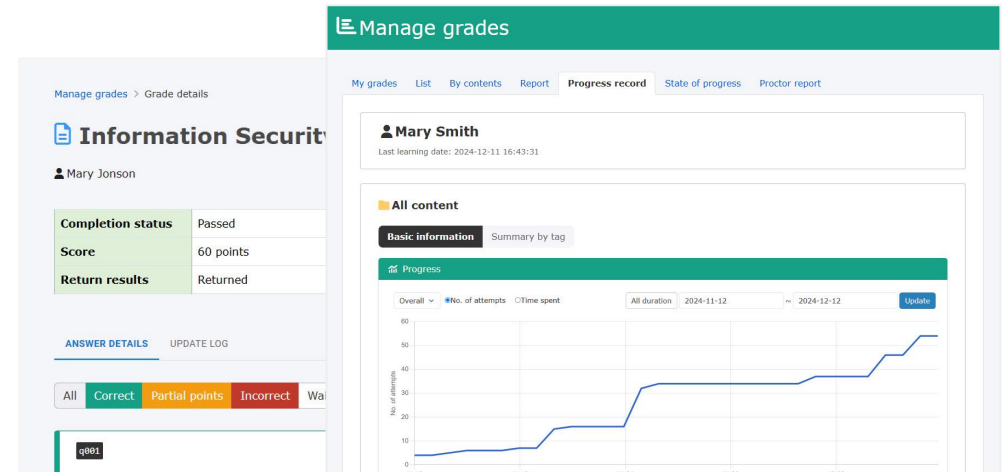
- Each tabs are designed to view the detailed grade information including time to spend and completion rates.
- The data will contribute to more proper feedback to the employees and placing the right people in the right positions.

10 Panels on Score Chart

- Heading
- Pass/Fail
- Message
- Scores
- Quiz list
- Section
- Chart Analysys
- Ranking
- Average Score
- Assessment Tags



[How to use/Score chart](#)

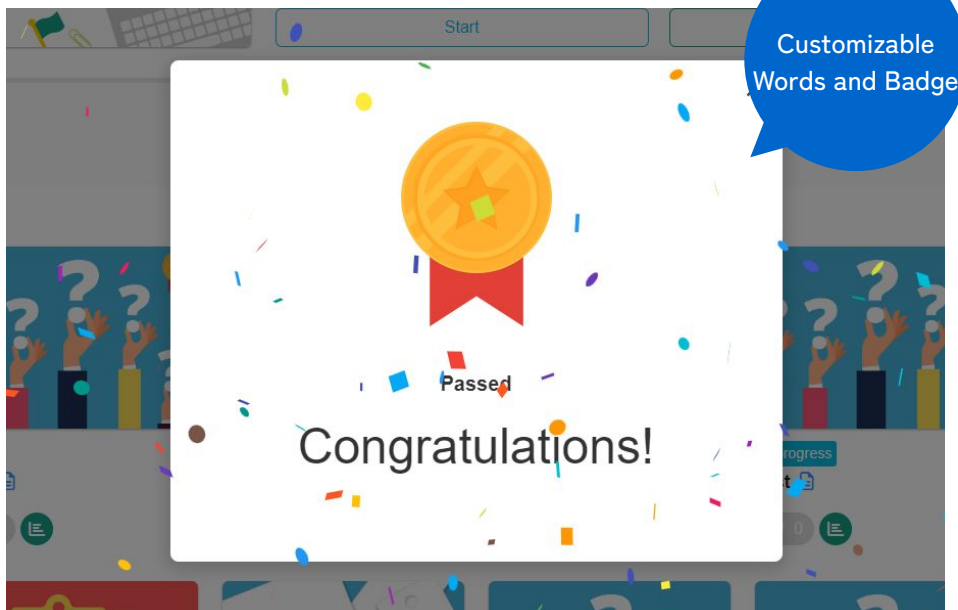


[How to use/Grade](#)

Stimulate Employees' Motivation and Engagement by Customizable Badges and Certificates

Badges/Confetti

- ✓ Give customized badges on learning progress
- ✓ Add more excitement with celebration confetti
- ✓ Quick view of earned badges



[How to use/Badges](#)

[How to use/Confetti](#)

Certificates

- ✓ Give customized certificates on learning progress
- ✓ Use certificates as proof of completion
- ✓ Quick view of earned certificates



[How to use/Certificate](#)

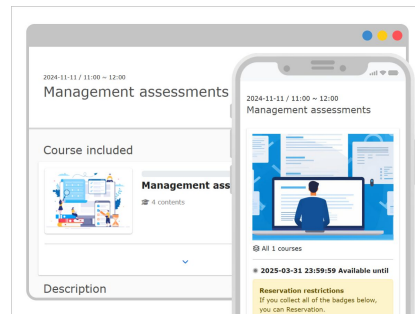
Manage All Steps in One Platform

Candidates can apply exams and complete payment online.

*Customization required.

Manage Exam Reservation

Customization option enables candidates to apply an exam online.



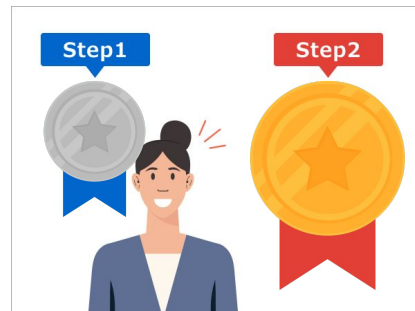
QR Code Attendance

For an on-site examination, the number of application can be controlled according to the venue capacity. Also, attendance can be recorded by scanning a QR code published when the application is completed.



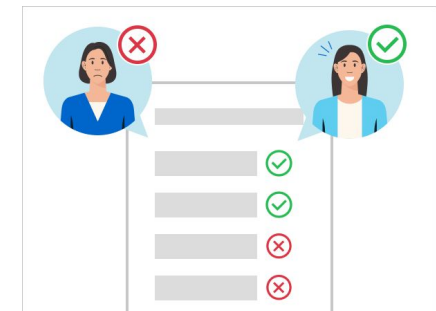
Reservation Restrictions

According to the badges each employee acquires, reservation of online exams can be restricted. For instance, you can allow only employees who have the badge of section chief to apply the promotional examination for an upper position.



Exam Exemptions

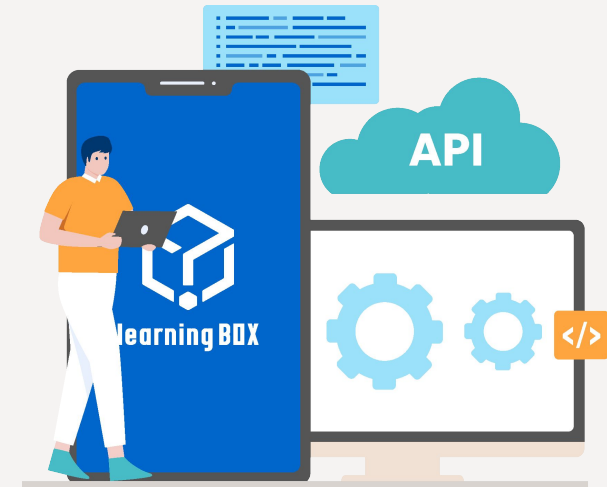
When there are employees who have already passed specific exams, they can be exempted from them. Bulk operation will reduce your workload even you have a number of examinees.



API Integration for Higher Performance

Integrating user/grade information from an existing system will streamline your management. Also, SSO (Single Sign-On), push notification and many more will improve seamless user experience.

*Customization option will be required.

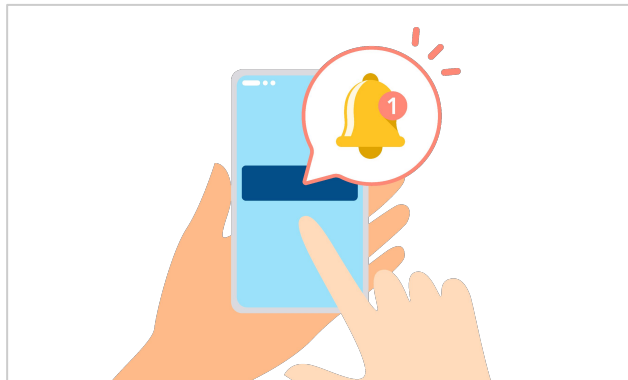


Integration with External Services

Microsoft Entra ID
Google Workspace
Zoom
Okta
OneLogin

Save your time with user/group integration by SAML, LDAP or SCIM.

SSO/Push Notifications



SSO and push notification will improve user experience and security, contributing to higher course completion rates.

Data Integration

Content, grades, user information, groups assigned, content assigned to groups, access log, restriction for login/view content, merged user information, stakeholder list, order history, etc.

*Integrated data includes detailed information such as updates and deletions.



Case Studies

✓ System Support Inc.

Innovation of Recruitment Examination

Online Exams are the solution for the Efficient Recruitment Process



System Support Inc.

Number of Employees: 943 (As of the end of June, 2021)

Business Details:

IT consultation, system design, system development, system operation and maintenance, implementation support for ERP package, infrastructure development including data base

Grading process was one of our biggest challenges. learningBOX significantly contributes to the time and workload management.

Challenges

- COVID-19 made it difficult to conduct on-site examinations
- It took hours to grade paper-based exams
- High implementation cost

Solutions

- Successfully switched exams from **paper-based to online**
- Automatic grading system **saved time and personnel cost**
- **Easy account management** **with low cost**

Click [here](#) to read more

The Future of Education

e-Learning Revolutionizes the Quality of Assessment

Benesse Corporation

learningBOX, Inc. has entered into a **capital and business alliance** with Benesse Corporation to accelerate the partnership between the two companies.



Yoichiro Nishimura

Director of learningBOX, Inc.



Ippei Hisatomi

Manager of Business Infrastructure
Transformation Department of
Benesse Corporation

Background

Education is now transforming in the digital innovation. To address to this fast-changing society, **we need to provide the outcomes of our study to the customers, accelerating the period.** Our partnership is the key for our future goals, and I thought the further cooperation would play an important role.



Capital and business alliance is the shortcut to discuss the feature enhancement in details before starting our system development. We will keep working together to create more opportunities to learn, and improve system platform for better user experiences.

Future Expectation

Close communication including knowledge sharing will result in the better outcomes for both of us. **We want to strengthen both of our business with this partnership,** more focusing on the learning environment in education and market trend.



The strategies for the faster upgrades is one of the our urgent challenges. As a platform provider, **we have responsibilities to respond to customer needs.** I believe our partnership will make it to improve customer satisfaction in addition to higher-quality of our service.

[Read more](#)



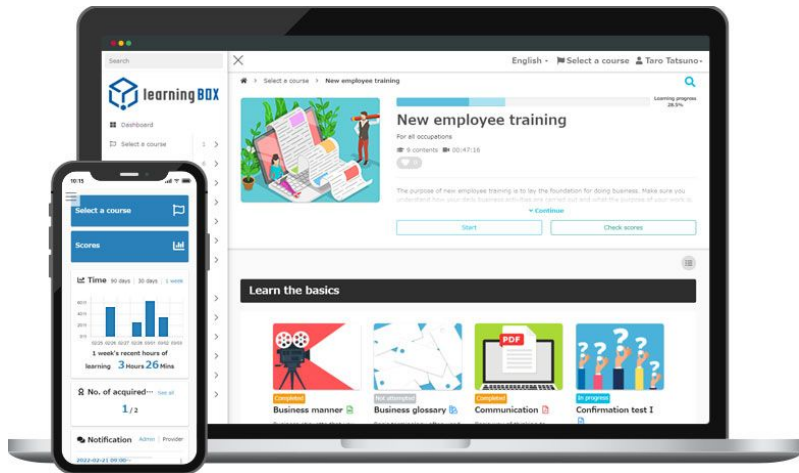
Organize online courses

- ✓ Teaching materials
- ✓ Web quizzes/tests
- ✓ AI assist

Make in-house content development easy

With learningBOX, you can upload ready-made content or create your own content.

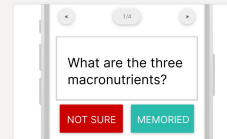
learningBOX is a solution to customise your online course as you like.



<SCORM Compliance>

learningBOX is compliant with the SCORM standard.
iSpring and Adobe Captivate can be used with learningBOX.

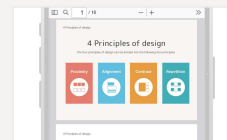
Teaching materials



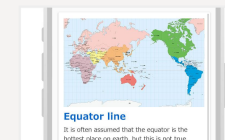
①Memorization card
Create memorization cards (flash cards) and improve your memory.



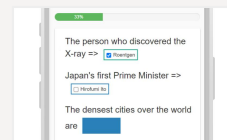
②Videos
Double speed playback, prevent skipping and more options are available.



③PDFs
Just upload PDF files to add textbooks, manuals, newsletters and more.



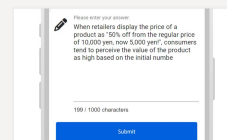
④Web page
This function allows you to share URLs, insert images and texts.



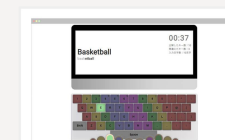
⑤Show/Hide workbook
Switching "show and hide" words, it will assist you to memorize words.



⑥Attached file
You can upload data and have your learners download various files.



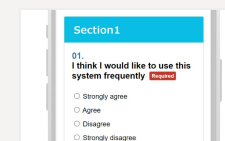
⑦Report assignment
This helps educators easily score and give feedback.



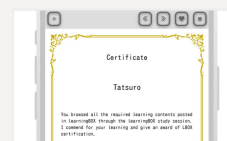
⑧Typing
Let learners compete for typing speed and accuracy like a game.



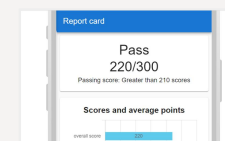
⑨Embedded content
Import and embed iframe materials including YouTube and Google Slides.



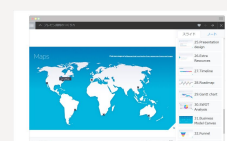
⑩Questionnaire
Get feedback from learners at the end of lecture, webinars or courses.



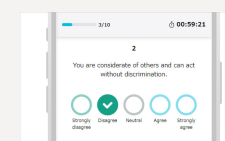
⑪Certificate
Certificates can be issued from templates of your original design.



⑫Score chart
Gradebook will be created from the record of learning.



⑬PowerPoint
Import PowerPoint file as e-learning content.

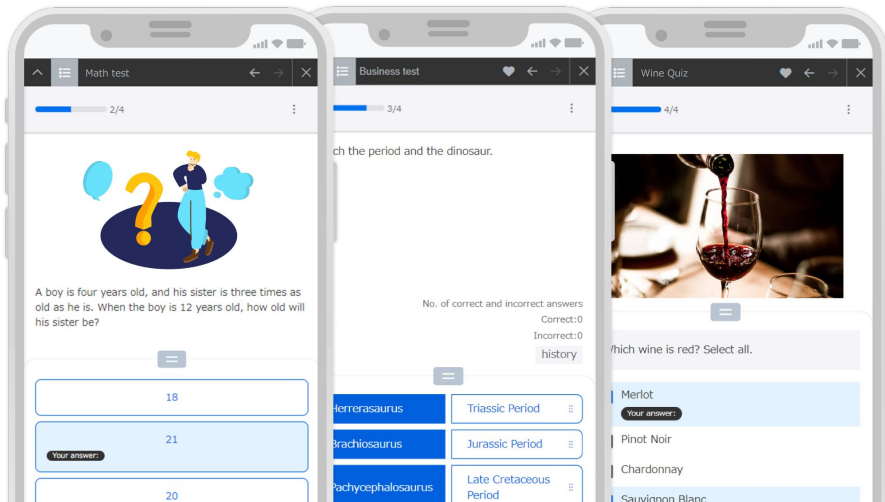


⑭Personality Test
Create your own personality test, and share the results with candidates.

With 13 types of quiz, accelerate your creativity.

No special skills are needed.

Our quiz formats will help you create full-fledged quizzes/exams in a few steps.



Purpose of Quiz

When does the school year begin in

① MCQ (button type)

Choose an answer out of multiple choices.

Lions belong to the cat family.

② True/false

Select "True" or "False."

Match the countries to their capitals

Japan	Tokyo
Finland	New Delhi
India	Helsinki

③ Matching

Match correct answers.

Fill in the blanks from the item provided.

The electric current is to voltage and to resistance.

④ Fill-in-the-blank

Drag an answer to an appropriate box.

Write your opinion about the lecture.

I think

⑤ Report/questionnaire

Get feedback from learners after the lectures.

Choose an image of a mammal from the following.

☐ 

⑥ Image MCQ

Select an answer from multiple choices with images.

⑦ MCQ (radio buttons)

You can choose one correct answer out of multiple choices.

⑧ Multi-MCQs

Select multiple answers from multiple choices.

⑨ Sequencing

Sequence answers in appropriate order.

⑩ Short answer

Type a short answer.

⑪ Multiple short answers

Type multiple answers.

⑫ Short answer+

Type multiple answers in any order.

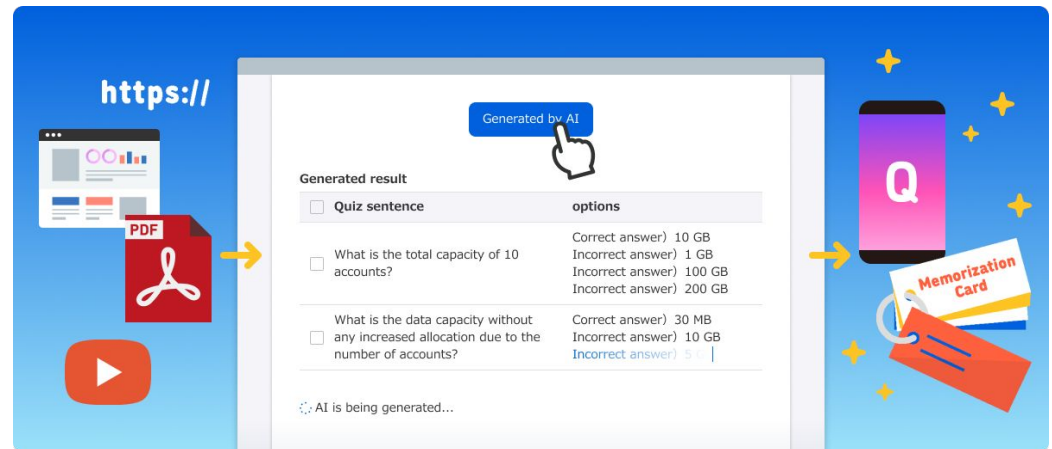
⑬ Pull-down menu

Select an answer from a list.

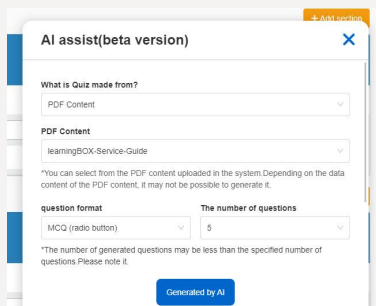
ChatGPT-API/AI Assist

Free up your time with AI assist Auto creation and assessment support

Our AI assistants can help you develop quiz content and evaluate writing assignments, which tends to consume a lot of time and effort. Now, use the AI assist to manage your time effectively.



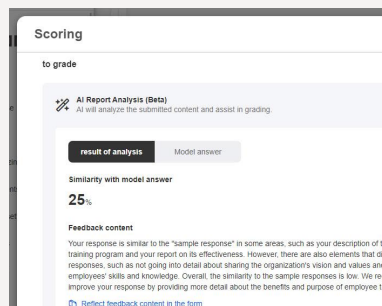
How does AI help you?



1. Content Generation

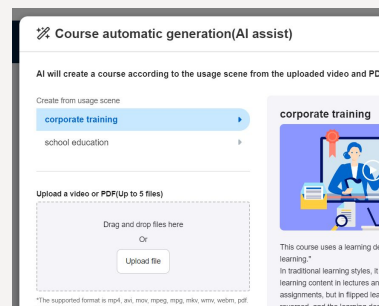
AI automatically generates a quiz/exam from a video, PDF, text and URL uploaded on learningBOX.

*Content cannot be generated from video subtitles.
*Depending on the material and input, errors may occur and content may not be generated, or the generated results may not be accurate.



2. Report Assignment Analysis

AI analyzes reports based on mock answers and automatically generates feedback comments. This reduces the time spent on evaluating writing assignment, which used to be a time-consuming task.



3. Course automatic generation

Even if you have never designed an eLearning course before, we can automatically generate a course based on your learning design from your videos and PDFs.

Try AI Assist for Free

Number of Free Trials

1. Generate quizzes/exams, memorization cards

- video: up to 3 times
- non-video content: up to 10 times

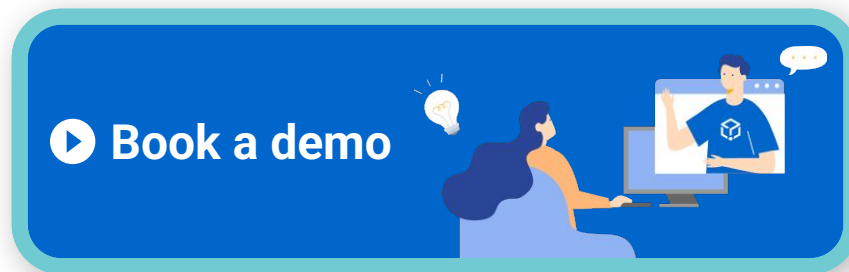
2. Report Assignment Analysis

- up to 100 times *Including the number of times the analysis is previewed





Let's get in touch.



Service Provider : learningBOX, Inc. [Corporate website](#)